

TOTO

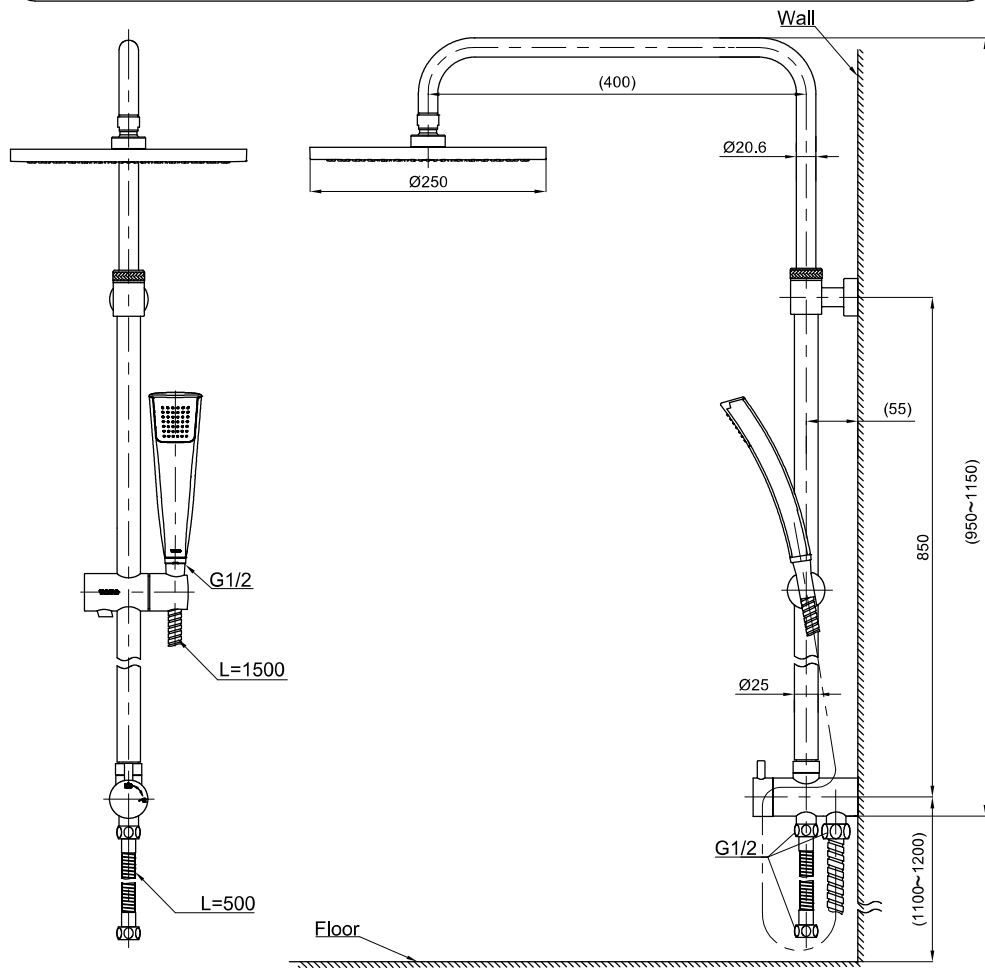
Installation and owner manual

To use the product effectively, should follow the instructions of this manual.

Component parts

Shower column set with hand shower 1 mode	TTSH301A
Shower column unit	1 set
Elbow pipe	1 pc
Fixed shower head (round)	1 pc
Wall holder + fixing screws	1 set
Inlet hose (L= 500)	1 pc
Shower hose (L= 1500)	1 pc
Hand shower	1 pc
Diverter valve	1 set

Product Drawing



Warning!

To prevent being scalded due to malfunction, make sure that the diverter valve is switched to the hand shower position in order to test the water temperature before using. Cannot allow the diverter valve switched underneath over head shower.

Care and Cleaning

Your new product is designed for years of trouble-free performance.

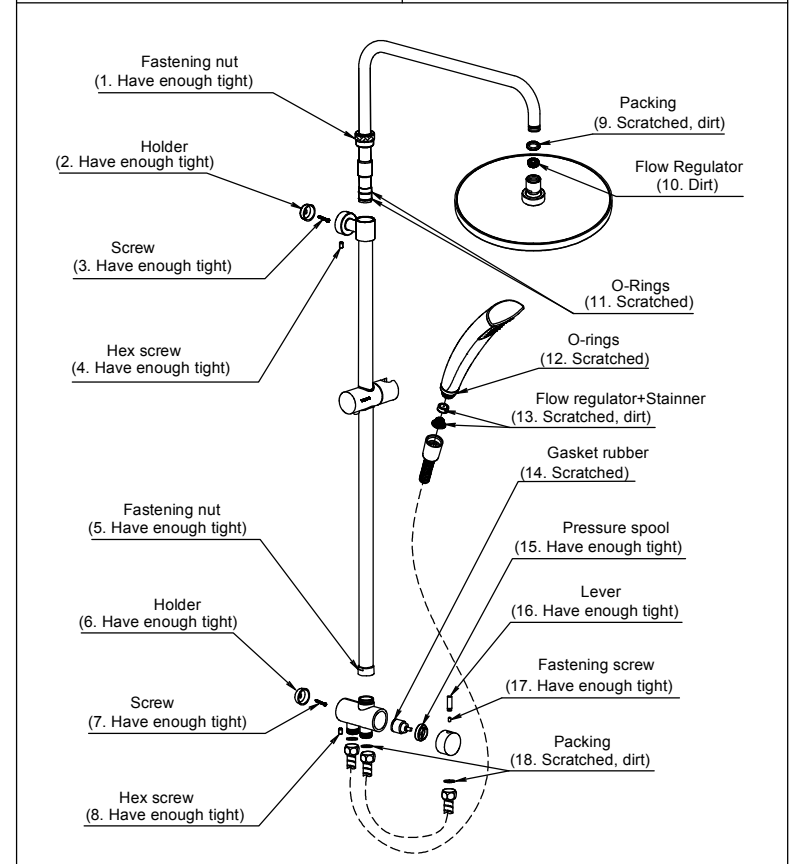
1. Keep it looking new by cleaning it periodically with mild soap, rinsing thoroughly with warm water and drying with a clean, soft cloth.
2. Do not use abrasive cleaners, steel wool or harsh chemicals, as these will damage the product.
3. Do not use liquid cleaners with acid-base content. In case of accidentally happening, rinse with pure water immediately in order to prevent any damage of product surface.

Failure to follow these instructions may void your warranty.

Troubleshooting

After installation, if there is malfunctions occurring, please see below.

Problem	Check Item
Less flow rate	10, 13, 18
Water leak	9, 11, 12, 14, 18
Vibration	1, 2, 3, 4, 5, 6, 7, 8
Unstable selection valve	15, 16, 17



Cautions before installation

1. Hot and cold water pressure during use.
Minimum pressure.....0.05 MPa (flow pressure)
Maximum pressure.....0.75 MPa (Static pressure)
2. The hot water temperature should not exceed 65°C. It's recommended in the range of 60±5°C, hot water do not use stream
3. The ambient temperature should above 0°C, if not higher than 0°C, product will be deformed, cracked and other damaged.
4. To prevent internal damage of shower, the water temperature of discharge side should not exceed 60°C. It's recommended below 45°C.
5. In case haven't used for long time. It may be lead to internal and external corrosion.

Installation Procedure

1. Installation wall mouting : Shown in Figure 1

Install holder shown in figure 1. Drill 2 holes on wall with diameter 6mm, 35mm depth, 850mm apart each other. Then put the anchor to the holes. Place the holder and screw to the holes respectively. Tighten screw to fix all parts together.

Note:

- a. Before drilling, make sure that there are not any cable, hidden pipes be in the drilling lines that will be caused the accident.
- b. Make sure that the holes are aligned in the vertical direction.

2. Installation fixed shower head : Show in figure 2

- a. Assemble elbow pipe and fixed shower head together. Tighten fixed shower head with the front end of the elbow, then wear two o-ring to the another end. Set fixed shower set to upper end of shower column. Set alignment of them. Adjust height of fixed shower head as requirement. Fix the certain height with fastening nut.
- b. Lock shower column to the wall. Push retaining block to the holder that mounted on the wall. Use hex wrench tighten them together. Check stability of installation.
- c. Put gasket and connect inlet hose respectively to bottom end of shower column (water supply side). Tighten them together. Then put gasket and connect another side of hose to water supply pipe of customer side. Make sure it doesn't leak after tightening.

3. Installation hand shower : Show in figure 2

Connect hand shower and its hose together, then connect another side of hose to shower side of bottom end of shower bar. Tighten them together. Make sure it doesn't leak. Then place the shower to shower hanger.

Note:

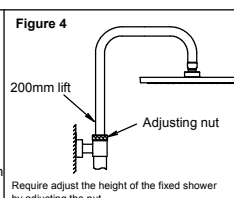
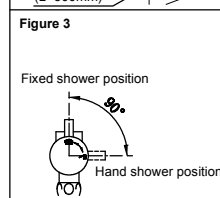
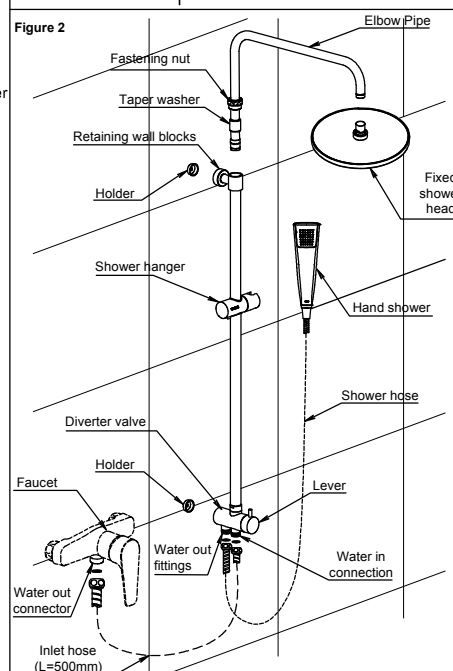
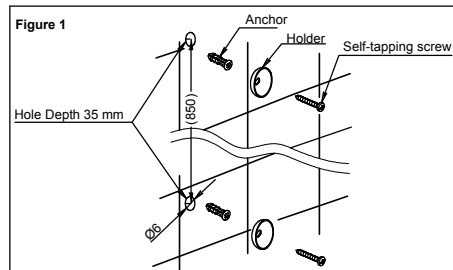
- a. For the successful installation, install shower hose firstly, followed by Inlet hose.
- b. User can press the knob opposite side of shower hanger to adjust its height as user required.

4. Trial for tightening confirmation

Do confirm all connections are tight after finished installation. Check plumbing leakage. Whole installation must be strong. User can supply water for trial checking the leakage of all connections (Pressure for check around at 0.1 Mpa or 1 Bar.)

5. Diverter Valve : Show in figure 3

- a. It's used for selected supplied water between hand shower or fixed shower head.
- b. Rotating the handle to horizontal direction, hand shower is in operated mode.
- c. Rotating the handle to vertical direction, fixed shower head is in operated mode.
- d. Rotating the handle of valve between vertical and horizontal, hand shower and fixed shower head is not operated.



TOTO

Warranty

▪ Please find detail in warranty card as attached

For more information, please contact : 02-117-9520 , 0-2026-3561

TOTO (Thailand)Co.,Ltd. 77 Moo 5. T.Nongplamor A. Nong Khae Saraburi 18140