



# TOTO




## HAND SHOWER TTSH102EMF AND TTSH102EMFK

### Important Safeguards

(For your safety, please follow the instructions below.)

Read these Important Safeguards instruction thoroughly before using your product and follow the precaution instructions carefully.

In this Instruction manual, the following symbols are shown for safe and proper use of your product and in order to alert you to the possibility of personal injury and damage to your property. The symbols and their meanings are as follows

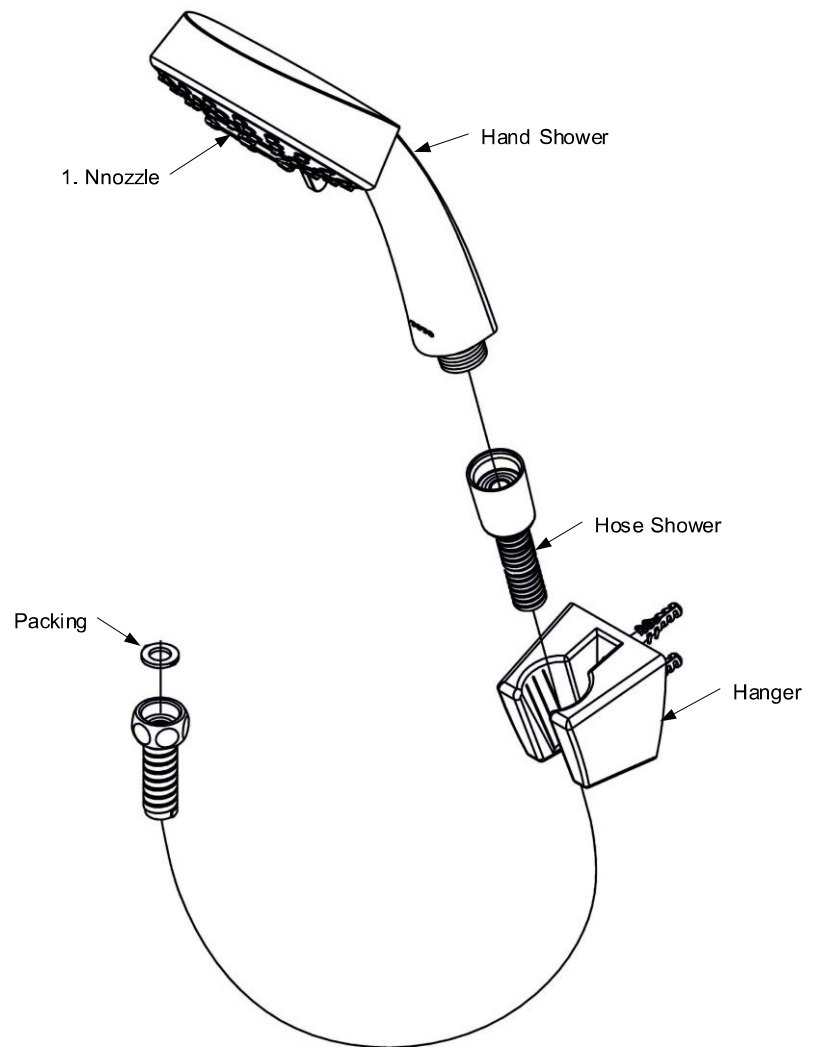
 <b>Warning</b>	
 <b>Prohibited</b>	Do not strike violently. This may cause the product is damage and personal injury.
	Do not use liquid cleaners with acid, base content, polishing opener or steel wool for cleaning.
 <b>Mandatory</b>	Before installation, clean out dirt or other impurities which may have collected in water pipes by allowing water to flow freely for a moment.

### Working recommendation

1. Make sure that equipment and tools are in proper working condition.
2. Water pressure should be between 0.05-0.75 MPa.( 0.5-7.5 Kg/cm<sup>2</sup> )

# TOTO

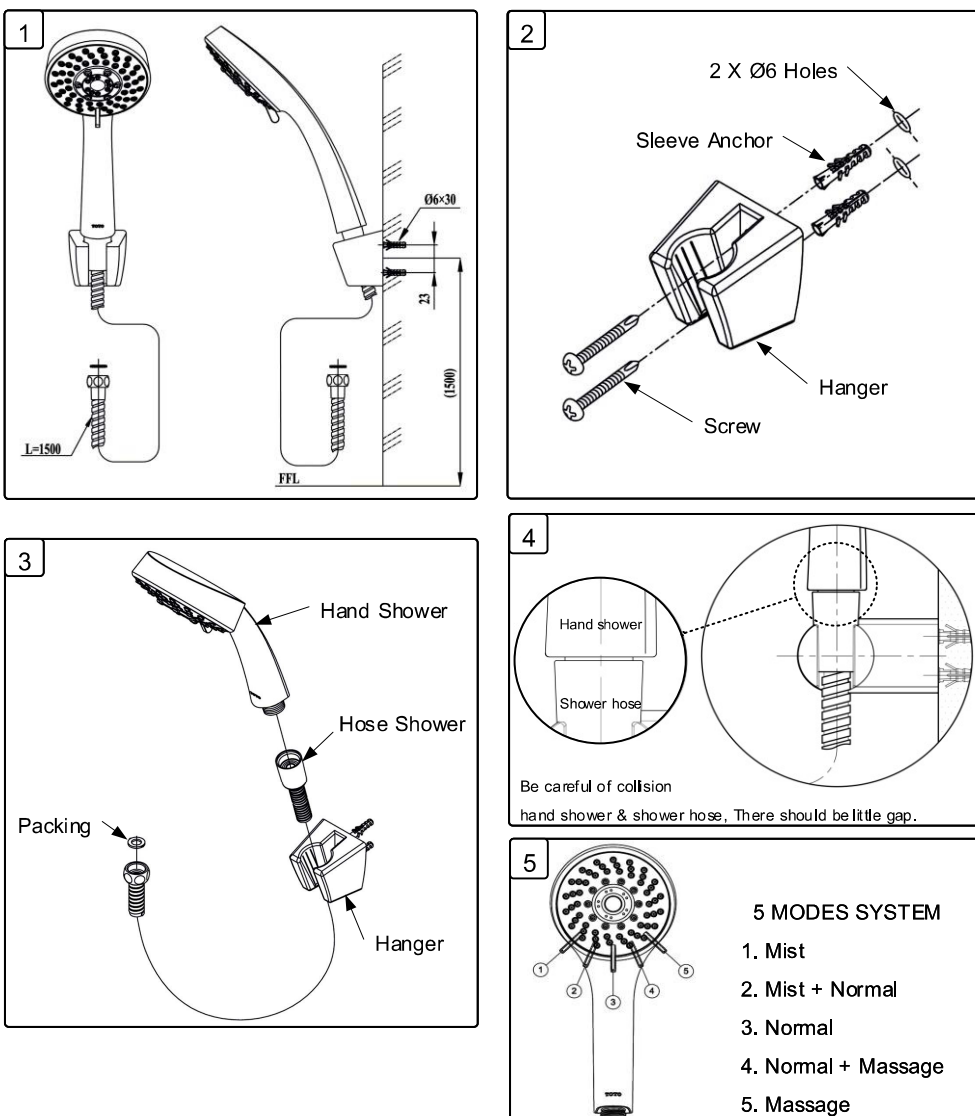
## HAND SHOWER TTSH102EMF AND TTSH102EMFK



# TOTO

## HAND SHOWER TTSH102EMF AND TTSH102EMFK

### Installation



# TOTO

## HAND SHOWER TTSH102EMF AND TTSH102EMFK

### Care and maintenance

1. Do not use toilet cleaners with acid, base content.
2. Do not use hard brush or steel wool. Soft cloth is recommended for cleaning to prevent scratch marks.
3. Special metal/chromium cleaning cream is recommended.
4. When tools are required to grip it. Use thick cloth to prevent scratch marks.

### Troubleshooting

Problem	Check point	Solutions
Water not flow from a nozzle	1	Disassemble and clean



#### Mandatory

If the product touch chemicals which mention in the the massage below, use clean water to wash and use a dry clean cloth to wipe it.



#### Do not

1. Do not use liquid cleaners with acid-base content, because surface will be get damaged
2. Do not make cosmetics stain on the shower (such as hair dyes, shampoo, styling gel or foam). If it stains on the product, it will change color of product or get damage. If the product is stained, use clean water to wash it.
3. If use the addition of a neutrality cleanser and cleanser of TOTO Maybe surface plastic of shower is damage.
4. Solvents such as thinner, benzene may be made of plastic or rubber parts that are damaged.



010517

### For more information

0M312R

Please contact, Tel. 0-2117-9520, 0-2026-3561

TOTO (THAILAND) CO. LTD 77 Moo 5, Nong Plamor, Nong Khae, Saraburi 18140